

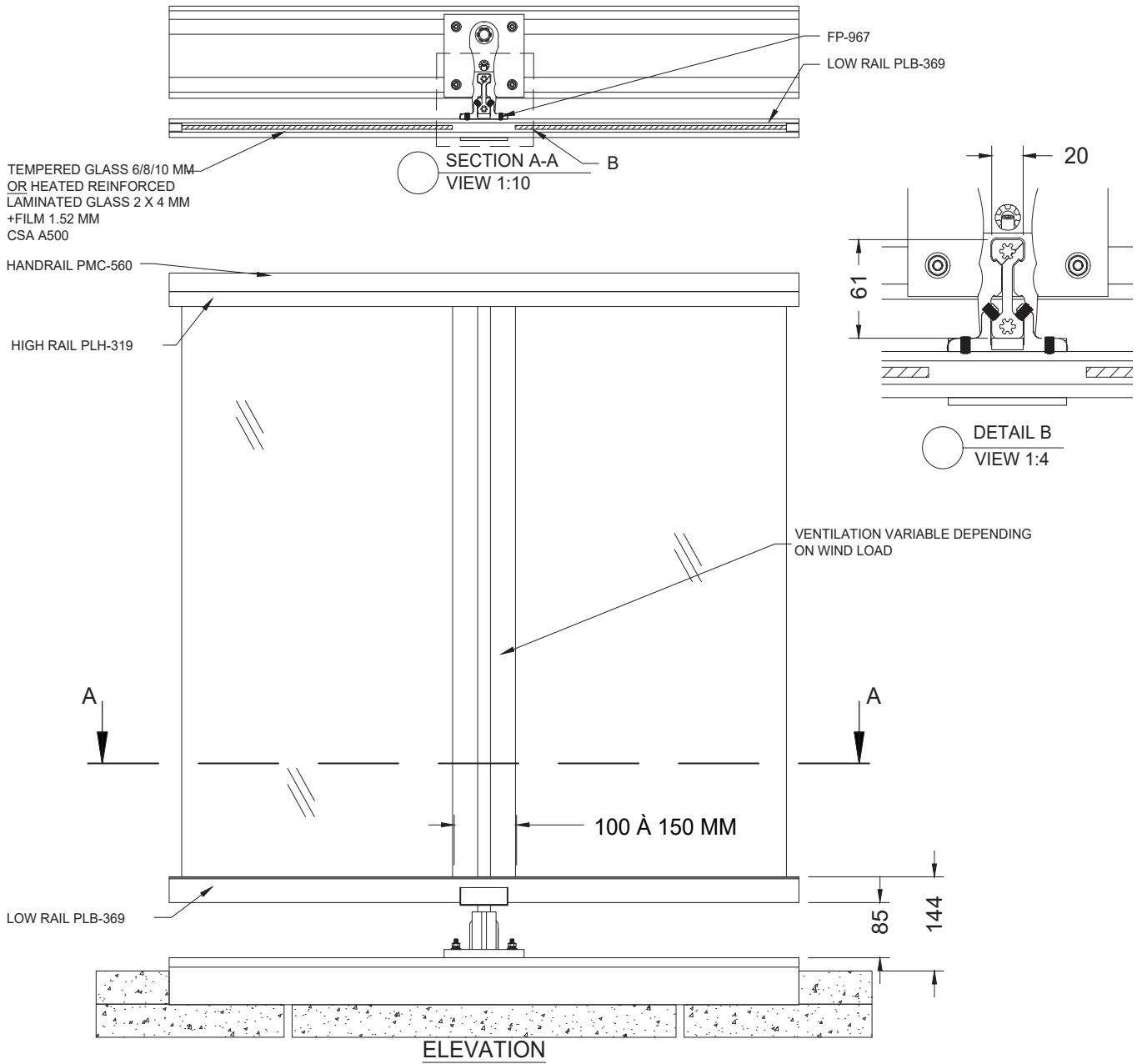
OTHER HANDRAILS AVAILABLE SEE FOLLOWING PAGES

SUPERIMPOSED SLABS ON PEDESTALS FOR 10 FLOORS OR LESS

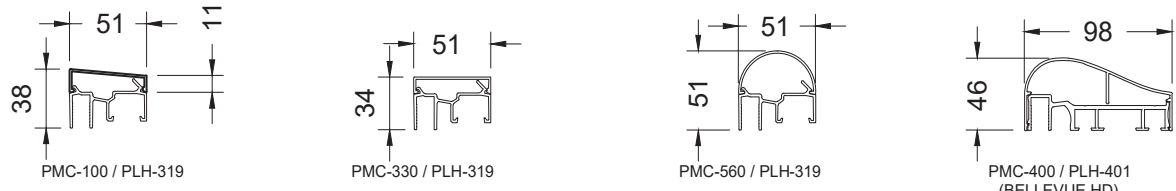
- * DOUBLE HERRINGBONE TILING AND BONDED WITH PREMIUM ADHESIVE AROUND THE BALCONY, CARRIED OUT BY A THIRD PARTY.
- * FOR 10 FLOORS AND ABOVE, SITUATION ONLY AVAILABLE WITH APPROVAL FROM THE AUTHORITIES OR APPLICABLE STANDARDS.

Scale : 1:9

BELLEVUE MODEL - TERRACE ON PEDESTALS



SECTION A



CHOICE OF HANDRAILS

Scale : 1:10

BELLEVUE MODEL - TERRACE ON PEDESTALS

**CHARTER FOR USE OF REINFORCEMENTS
IN THE CASE OF CONTINUOUS PASSAGEWAYS**
 FROM 0M TO 4M: NO REINFORCEMENT
 FROM 5M TO 9M: 1 REINFORCEMENT
 FROM 10M TO 14M: 2 REINFORCEMENTS
 FROM 15M TO 19M: 3 REINFORCEMENTS
 FROM 20M TO 24M: 4 REINFORCEMENTS
 FROM 25M TO 30M: 5 REINFORCEMENTS

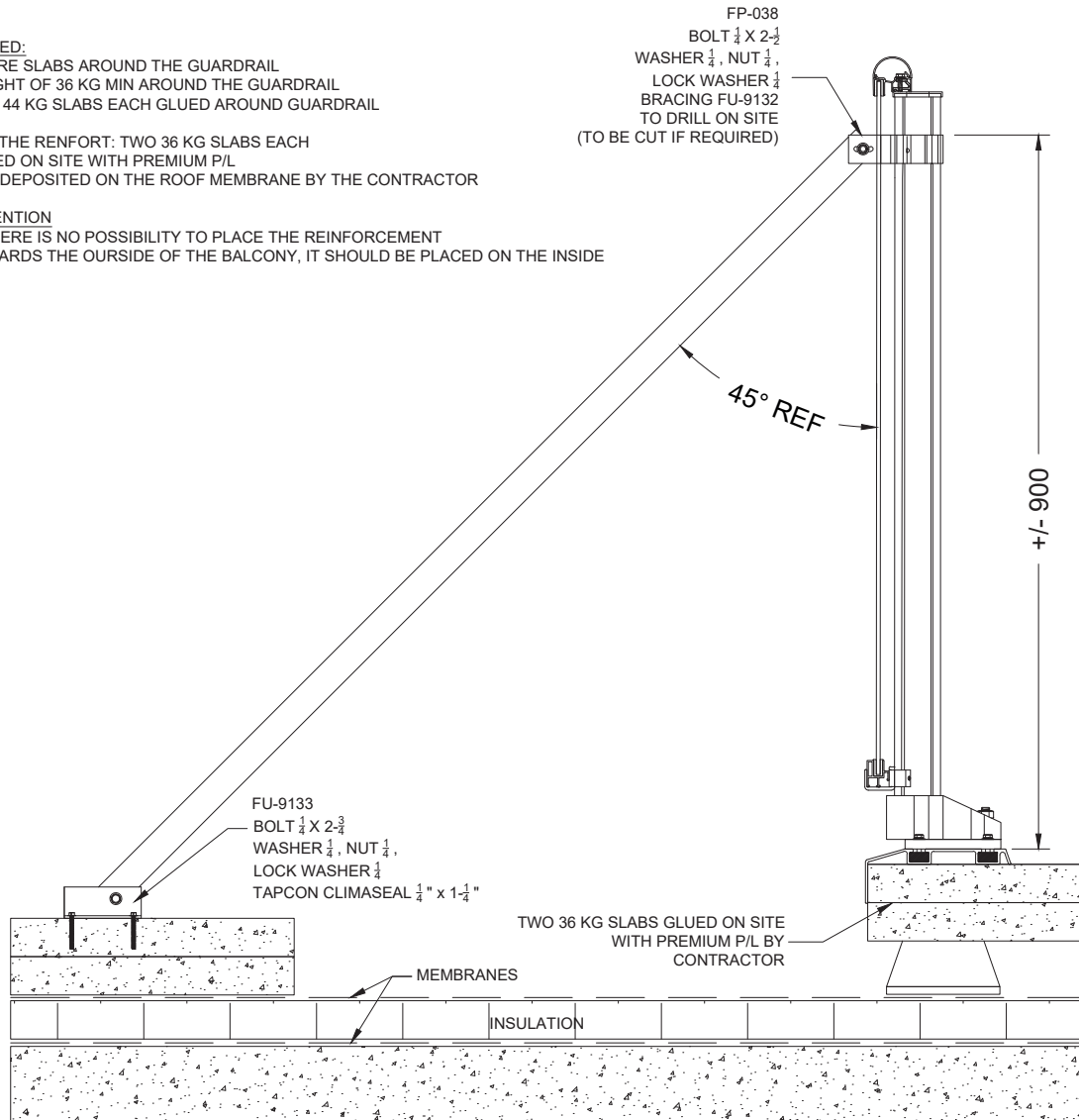
REQUIRED:

- ENTIRE SLABS AROUND THE GUARDRAIL
- WEIGHT OF 36 KG MIN AROUND THE GUARDRAIL
- TWO 44 KG SLABS EACH GLUED AROUND GUARDRAIL

FOR THE RENFORT: TWO 36 KG SLABS EACH
 GLUED ON SITE WITH PREMIUM P/L
 AND DEPOSITED ON THE ROOF MEMBRANE BY THE CONTRACTOR

ATTENTION

IF THERE IS NO POSSIBILITY TO PLACE THE REINFORCEMENT
 TOWARDS THE OURSIDE OF THE BALCONY, IT SHOULD BE PLACED ON THE INSIDE



INSTALLATION OF SUPERIMPOSED SLABS ON PEDESTALS WITH REINFORCEMENT ON PASSAGEWAY
 *SIDE-BY-SIDE SLAB INSTALLATION ON PEDESTALS AVAILABLE DEPEINDINF ON PROJECT LOADS

SECTION A

Scale : 1:10

BELLEVUE MODEL - TERRACE ON PEDESTALS